


B2

SIMPLY BRILLIANT.

EVERYTHING YOU NEED IN A RIFLESCOPE.
THE NEW BLASER B2 OPTICS FOR
DAY AND NIGHT HUNTING.
MADE BY BLASER.
MADE IN GERMANY. 



Blaser

R8

B2

MASTER THE DARKNESS.

For hunting wild boar at night, clip-on devices have become indispensable. The development of the new Blaser B2 riflescope line was therefore the logical next step for us.

OPTIMIZED FOR NIGHT TIME HUNTING.

Designed from the ground up for the use with clip-on technology, the Blaser B2 riflescopes have undergone the same shock resistance tests that are standard for testing premium riflescopes – and all B2 models passed with flying colors.

With an overall length that is up to four centimeters shorter than comparable scopes, the Blaser B2 riflescopes are extremely compact. When hunting, this short overall length ensures that a clip-on device can be comfortably operated from the shooting position and that the rifle's center of gravity is not shifted forward unnecessarily. Another advantage of the compact design is the short range of motion of the zoom system's movable lenses which results in improved mechanical precision and a more stable point of impact when changing magnification. At the same time, the mechanical robustness compensates for the additional stress on the scope when shooting with a clip-on device.

In combination with the easy-to-mount, absolutely repeatable attachment mounts and the corresponding clip-on device, the Blaser B2 riflescopes become true night hunting specialists.



Figure shows rifle and riflescope with optional extras.



EASY. FAST. 100% RETURN TO ZERO.

Even under rough hunting conditions, the riflescope and clip-on device can be connected quickly and easily in just a few steps – with 100% repeatability. Both optics thus become a precise unit.



Blaser B2 2-12x50 iC

Blaser CM 56

Thread adapter

LIEMKE LUCHS-1

B2

MORE OPTIONS.

01

03

05

04

02

Figure shows rifle and riflescope with optional extras.



06

01 | BLASER B2 OCULAR FLIP COVER WITH iC FUNCTION (optional)

02 | 6X ZOOM

03 | WINDAGE ADJUSTMENT

04 | ILLUMINATION ADJUSTMENT (lockable)

05 | ELEVATION ADJUSTMENT (QDC+ optional)

06 | BLASER B2 OBJECTIVE LENS FLIP COVER WITH MOUNT FOR CLIP-ON DEVICE (optional)

B2

VERSATILE.

WITH 6X ZOOM.

FOR EVERY APPLICATION.

BLASER B2 1-6x24 iC

Driven hunt / Stalking + Night hunting with clip-on device



BLASER B2 2-12x50 iC

Stalking / High seat + Night hunting with clip-on device



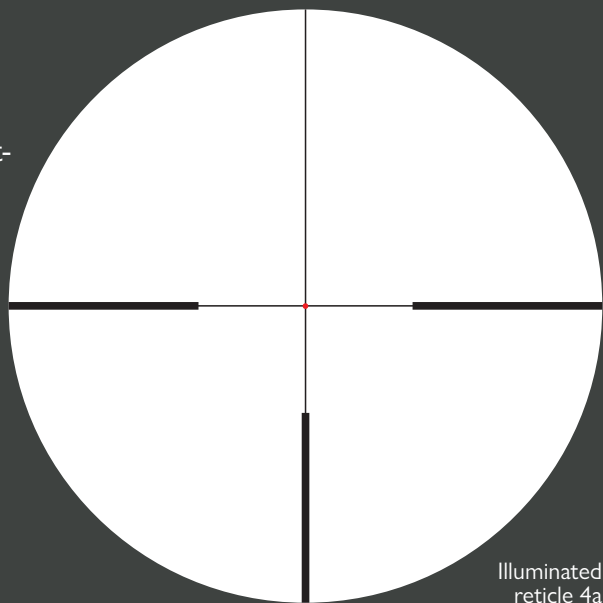
BLASER B2 2.5-15x56 iC

High seat / Long-range shooting + Night hunting with clip-on device



BY DAY AND NIGHT.

Fine, daylight bright illuminated reticle (fiber optics) in the second focal plane.



Illuminated reticle 4a

FOR EVERY TYPE OF RIFLE.

All models are available with inner rail or 30 mm main tube. This allows mounting on any make and type of rifle.


Inner rail



30 mm main tube



FEATURES

- | 6x zoom
- | Optimized for clip-on devices – compact and robust
- | Fine, daylight bright illuminated reticle (fiber optics) in the second focal plane
- | 94 / 92 % day- / night transmission
- | Smart Lens Protection (SLP) – hydrophobic lens coating
- | 30 mm main tube / inner rail optionally
- | Parallax adjustment, with tactile click at 100 m (only with B2 2.5-15x56 iC)
- | Continuously variable adjustment of the illumination intensity
- | Rubberized magnification ring
- | 90 mm eye relief
- | Nitrogen purged, waterproof to 4 m
- | Made in Germany 

TECHNICAL SPECIFICATIONS

| | 1-6x24 iC | 2-12x50 iC | 2.5-15x56 iC |
|-----------------------------------|----------------|----------------|---------------|
| Magnification | 1-6x | 2-12x | 2.5-15x |
| Effective objective lens diameter | 9.8 - 24 mm | 19.6 - 50 mm | 24.5 - 56 mm |
| Exit pupil | 9.8 - 4 mm | 9.8 - 4.2 mm | 9.8 - 3.7 mm |
| Eye relief | 90 mm | 90 mm | 90 mm |
| Diopter adjustment | -3 / +2 dpt | -3 / +2 dpt | -3 / +2 dpt |
| Field of view at 100 m | 40 - 6.7 m | 20 - 3.3 m | 16 - 2.6 m |
| Nitrogen purged | yes | yes | yes |
| Waterproof | 4 m | 4 m | 4 m |
| Elevation / windage at 100 m | ±150 / ±150 cm | ±125 / ±125 cm | ±125 / ±60 cm |
| Elevation with QDC+ | – | 80 cm / 100 m | 80 cm / 100 m |
| Adjustment per click | 1 cm / 100 m | 1 cm / 100 m | 1 cm / 100 m |
| Parallax adjustment | 100 m fixed | 100 m fixed | 50 m - ∞ |
| Overall length | 273 mm | 330 mm | 327 mm |
| Weight without / with inner rail | 590 / 615 g | 735 / 760 g | 800 / 825 g |

BLASER QDC+

QUICK DISTANCE CONTROL+

The Blaser QDC+ allows you to adjust the shooting distance up to a range of 500 m directly on the elevation turret of your Blaser B2 riflescope. For optimal adaptation to your own rifle, ten interchangeable engraved rings are included, covering a wide range of hunting ammunition. Additionally, individual markings can be applied to a blank ring.

As with all Blaser riflescopes, you have the possibility to lock the turret at the zero position and at 4 clicks high (most recommended distance). This insures that an unintentional adjustment is not possible and the locked position gives you the safety of a clean shot at common hunting distances.

The Blaser QDC+ is optionally available for the models B2 2-12x50 iC and B2 2.5-15x56 iC and very easy to retrofit yourself.



B2 FLEXIBLE. INDIVIDUAL. PRECISE.



SELECTED LOAD
CALIBER 8.5x55 BLASER
Bullet: Barnes TTSX 10,4 g / 160 gr
Ballistic coefficient: 0,344
Muzzle velocity: 940 m/s

200 m 300 m 400 m 500 m

The ballistics calculator tells you the appropriate ring and provides a clear illustration of the trajectory.

Ring 10
Ring 9
Ring 8
Ring 7
Ring 6
Ring 5
Ring 4
Ring 3
Ring 2
Ring 1



THE BLASER BALLISTICS CALCULATOR

With the Blaser ballistics online calculator, you can easily determine the QDC+ ring that best matches your rifle and selected load.

Simply select your Blaser riflescope as well as your ammunition and the program calculates the trajectory and tells you the appropriate ring.

In order to achieve even more precise results, muzzle velocity, ballistic coefficient, scope height and environmental conditions can be customized.

TEST NOW!
BLASER BALLISTICS CALCULATOR:



www.blaser.de/en/QDC-plus

Blaser B2 Ocular Flip Cover iC (optional)



Flip cover closed:
reticle illumination switched off

Flip cover open:
reticle illumination switched on

- | Compatible with all B2 models
- | Optimal protection of the ocular lens against moisture and dirt
- | For rifles without Illumination Control (iC), the optional iC magnet in the flip cover controls the iC function

B2

iC FOR ALL.

In combination with the Blaser B2 Ocular Flip Cover with iC, the Blaser B2 riflescopes offer the ingenious possibility to transfer the automatic activation of the illuminated reticle (Illumination Control) to all rifle types and makes.



Figure shows rifle and riflescope with optional extras.



Figure shows rifle and riflescope with optional extras.



B2

ACCESSORIES.

B2 PERFECT MATCH.



Blaser B2 Objective Lens Flip Cover



- | Integrated mount for Blaser CM attachment mount:
Only solution on the market that does not require the flip cover to be removed for installing the attachment mount.
- | Optimal protection of the lens against moisture and dirt
- | Blaser B2 Objective Lens Flip Cover for
B2 2-12x50 iC (56 mm outside diameter) and
B2 2.5-15x56 iC (62 mm outside diameter)

USE CASE 01: The riflescope is used with Blaser B2 Objective Lens Flip Cover, Blaser CM attachment mount and clip-on device – the cover in the flip cover must be removed so that the attachment mount can be slid on for a perfect fit.

USE CASE 02: The riflescope is used with Blaser B2 Objective Lens Flip Cover, Blaser CM attachment mount and clip-on device – the cover in the flip cover must be removed so that the attachment mount can be slid on for a perfect fit.

Blaser CM Attachment Mounts CM 56 / CM 62

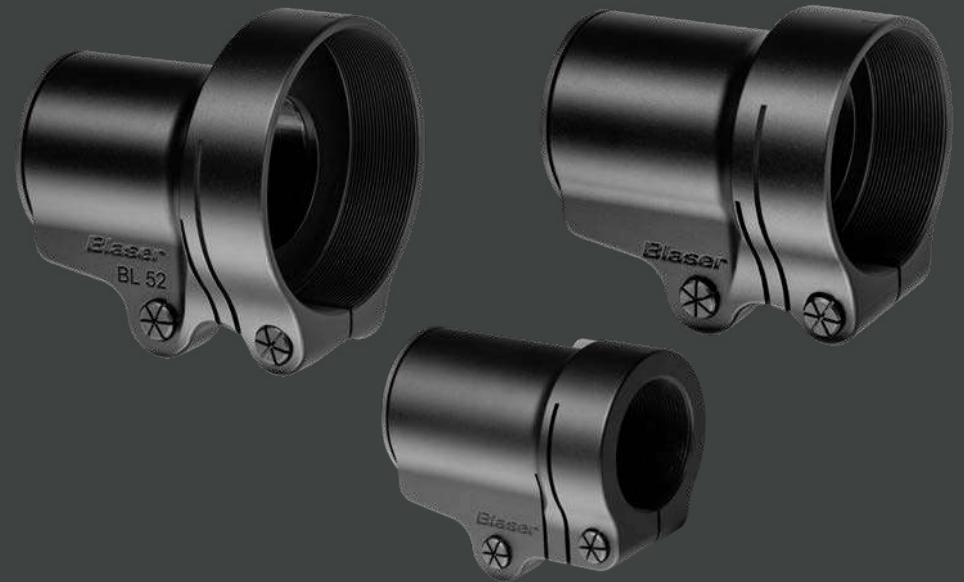


USE CASE 01: The riflescope is used without Blaser B2 Objective Lens Flip Cover, but with Blaser CM attachment mount and clip-on device – the cover is left in the Blaser CM attachment mount.

USE CASE 02: The riflescope is used with Blaser B2 Objective Lens Flip Cover, Blaser CM attachment mount and clip-on device – the cover must be removed, so that the Blaser CM attachment mount can be slid on for a perfect fit.

- | Attachment mounts suitable for B2 2-12x50 iC and B2 2.5-15x56 iC
- | Compatible with Blaser B2 Objective Lens Flip Cover
- | Secured against rotation (aligned to the flip cover)
- | Easily clamped into place

Blaser BL Attachment Mounts BL30, BL43, BL52



- | Attachment mounts suitable for B2 1-6x24 iC S (with inner rail)
- | Available versions:
BL30: M30x1 for LIEMKE MERLIN-13
BL43: M43x0,75 for LIEMKE LUCHS-1 and MERLIN-35
BL52: M52x0,75 for LIEMKE MERLIN-50, MERLIN-42
- | Secured against rotation (aligned to the rail) and locked into place



LIEMKE MERLIN-13

Blaser BL30

Blaser B2 1-6x24 iC S



EXPERIENCE
THE BLASER B2
RIFLESCOPES NOW!



www.blaser.de/en/RiflescopeB2

We would like to thank all our hunters for taking part in the photo shoots. Subject to technical changes, errors and color variations. Models can vary from country to country. Blaser hunting rifles, ammunition and silencers are distributed exclusively through authorized Blaser dealers and are sold only to legal permit holders. Please understand the legal regulations for the usage of silencers and clip-on devices in your area and note that not every country allows their use.

Blaser GmbH
88316 Isny im Allgäu
Germany
www.blaser.de

Stay in touch!
Get the latest news and most recent developments by email:
www.blaser.de